

# WHAT'S HAPPENING

Maryland Association for Family and Community Education, Inc. Newsletter

## MARCH

- All Tune Out Violence Campaign
- All Women's History Month
- 6 10:00AM Executive Committee Meeting, Anne Arundel Extension Office
- 27 **Deadline for Region I Meeting**
- 31 Heart of FCE, Spirit of FCL and Outstanding Family Award due

## APRIL

- All Celebrate Earth Day
- 1 Tune Out Violence sheets due Lou Marlin
- 1 **Deadline for Region II Meeting**
- 5 **TUNE OUT VIOLENCE DAY**
- 6 **9:30 AM Region I Meeting, Ali Ghan Shrine Cumberland, MD**
- 15 All State reports due to NAFCE
- 20 **9:30 AM Region II Meeting, First Evangelical Lutheran Church, Ellicott City, MD**

## MAY

- 1 LOOK WHAT'S HAPPENING deadline for items to Editor
- 6 10:00AM Executive Committee Meeting, Anne Arundel Extension Office

## JUNE

- All Nominees for State Officers, Group II
- 5 10:00AM Executive & Education Committee Meeting, Anne Arundel Extension Office

## Inside.....

- From The President 2
- News from the VP for Program 2
- Public Policy Notes 2
- In and Around Maryland 3
- Directions to Regional Meetings 4
- Women's Heritage Center 5

- Report from ACWW 6
- An Angel 6
- Mean Moms 7
- Best Web Sites 7
- Chocolate Almond Bars 8

## REGIONAL MEETINGS

Be sure to get your registration in for these meetings. Allegany County will host Region I on April 6, 2006 at the Ali Ghan Shrine in Cumberland. Region II will be hosted by Howard County on April 20, 2006 at the First Evangelical Lutheran Church, Ellicott City. See maps on page 4.

## Family Choice — TV Pledge Sheets

Send your completed TV Pledge Sheets by April 1, 2006 to:  
 Louella Marlin  
 6 Rollins Ct.  
 Rockville, MD 20852



## MDFCE Web Site is [www.mdafce.org](http://www.mdafce.org)

THE NEWSLETTER IS ON THE WEB!!!!  
 Click on the "Look What's Happening" button on the left, the newsletter will appear. There you have it, it's that easy!  
 Continue to update your web page. Send newsletters, calendars and information to Marie Moeller. E-mail [mariemoeller@yahoo.com](mailto:mariemoeller@yahoo.com)

## Newsletter Deadline: May 1

Send all articles, Bulletin Board items, recipes, address changes and trivia for the newsletter to:  
 Jean Purich, 15500 Gallaudet Ave, Silver Spring, MD 20905-4196 or email me at [jcpurich@cs.com](mailto:jcpurich@cs.com) with your information.

## FROM THE PRESIDENT

Four Maryland FCE board members enjoyed an extra early spring this year. Evelyn Ziegler, Jeanne Purich, Marilyn Simonds and I attended the National FCE Mid-Year Leadership Meeting in Phoenix, AZ, February 2-6. Temperatures ranged between 75 and 80 degrees while we were there--what a treat for February! In spite of the fact that many folks were attacked by the "bug" we attended workshops to prepare us for programs and issues for Maryland. We expect to share some of the good ideas with you at the spring regional meetings.

What a pleasure it is to be with you at the Maryland FCE meetings. I'm looking forward to being with you at the Region I meeting in CUMBERLAND on April 6 and the Region II meeting in ELLICOTT CITY on April 20. We encourage you to bring a friend and all the members of your club.

Knowing how quickly your calendar fills up, we want you to include the National FCE Annual Conference to be held July 20-23 in NASHVILLE, Tennessee. This is FCE's 70th Anniversary and there is an offer of \$70 off the registration for the first 70 first-timers to register. What a bargain and what a great city to visit.

We hope you plan to attend Maryland FCE's Annual Conference in WESTMINSTER October 17 and 18. Our Carroll County members are busy planning an exciting time. I think we can also find some delicious local apples while we are there.

Lastly, our next ACWW meeting is scheduled for June 2-10, 2007, in Turku, FINLAND. Turku is located in the southern end of the country about 75 miles from Helsinki. Whether or not you expect to attend, this is a good time to learn some geography, history, and culture about Finland. We're looking for some members and friends who have some first-hand knowledge about Finland. Perhaps you have visited there or have some relatives or ancestors from that country. Please contact me at 410-398-4536 or [fdjrpugh@aol.com](mailto:fdjrpugh@aol.com) about Finland or any comments, questions or concerns.

Judy Pugh, President

## NEWS FROM THE VICE PRESIDENT FOR PROGRAM

On February 3-5-2006, I was privileged to attend the NAFCE mid-year meeting in Phoenix, Arizona with three other members of MAFCE. Programs were presented on such diverse topics as Cocoons of Culture, Recruiting and Keeping New Members, U.S. Judicial System, National Issues and Parliamentary Procedure. Round table discussions were held with the national board members. This gives the states an opportunity to ask questions, make recommendations and generally learn more about the board's role in the organization. These meetings also provide an opportunity for members from all over the country to interact with each other and learn about successful programs in other areas. You will learn more about the new programs at our upcoming regional meetings so be sure and get your registrations in early.

Evelyn M. Ziegler  
Vice President for Programs  
410-465-3587

## PUBLIC POLICY NOTES

The Maryland General Assembly reconvened in Annapolis for its annual 90 day legislative session. Being an election year for Governor Ehrlich, he moves toward the middle of the political arena. With a surplus budget of \$1.7 billion, he pledges to seed new programs and build up others: \$380 million for school construction, \$172 million for more higher education; \$98 million for a property tax cut; \$90 million more to support disabled people; \$14 million for the arts; \$700,000 to track sex offenders, \$20 million on stem cell research. We'll watch.

Maryland lawmakers are pushing to regulate the sale of violent video games to minors. Delegates have proposed stricter labeling and restrictions on sales to minors. A disturbing problem is the growth in popularity of violent video games, such as the Grand Theft Auto series.

Marie Moeller  
Vice-Pres. for Public Policy

## FAMILY AND COMMUNITY LEADERSHIP (FCL) CERTIFICATION

FCE members who wish to be certified as FCL Trainers need to complete 30 hours of FCL Training with 3 hours in each of the following categories (a total of 18 hours) plus 12 more hours in any combination of these categories: Leadership, Group Process, Issue Analysis and Resolution, Public Policy, Volunteerism and Teaching Techniques. (See back of certificate and/or National FCE Handbook).

Add up the hours on your collected FCL Certificates and if you lack yours in any of these categories for the 18 hours, inform me so that the MDAFCE Educational Committee can plan our educational programs.

If you have received your FCL Certified Leader Badge since 1995, please contact me.

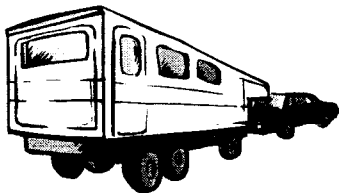
Marie Moeller  
Chairperson of FCL  
301-292-2365 or [mariemoeller@yahoo.com](mailto:mariemoeller@yahoo.com)

## Hello from Country Women's Council!

The 2006 Winter issue of the CWC newsletter, *News Sheet*, is now on the CWC web site [www.cwcusa.org](http://www.cwcusa.org). Please share this information with your membership.

## Bulletin Board

Sue Rittner's NEW address is:  
400 Heritage Lane  
Jonesborough, TN 37659  
423-753-6488



## IN AND AROUND MARYLAND

### CARROLL COUNTY

Carroll County FCE members got organized in January with their program "Getting Organized". In March they will learn what to do into prepare for a disaster. Do you know what goes in a winter survival kit? This Hearth Fire program will help you pack your kit.

### MONTGOMERY COUNTY

Four members attended Women's Legislative Day. Dr. Susan Wood former head of Women's Health at the FDA was the keynote speaker.

Twenty (20) FCE members and guests attended the program Eye Care and Eye Diseases. Personnel stories were shared as well as information distributed from the National Eye Institute. Afterwards, Valentines were made for the Sheriffs Youth Boy's Ranch, a residential home for boys age 8 to 21.

Making blankets for sick and traumatized children is an ongoing outreach project of MCFCE. In February, approximately 100 women and children (including 11 children of a Brownie Troop) attended one of the sewing sessions. We have made over 550 blankets in 4 months. This wonderful response has left us in great need of acrylic yarn. **If you have any yarn you would like to donate to this cause, please bring it to the regional meetings in April.**

### St. MARY'S COUNTY

We are sad to say that Sue Rittner has left the area. She and her husband, Gill, have moved to Tennessee. We wish them well and we will miss them.

## SENIORS ON THE M.O.V.E.

A driving safety course for seniors will be held at the Rockville Senior Center, 1150 Carnation Drive Rockville MD 20850-2044 (240-314-8800) [www.rockvillemd.gov/seniorcenter](http://www.rockvillemd.gov/seniorcenter) on March 7, 14, 21, and 28 from 10 AM - Noon. This is a free program but you do need to register. There will not be any Highway Safety meetings this year.

## Directions to Region I Meeting April 6

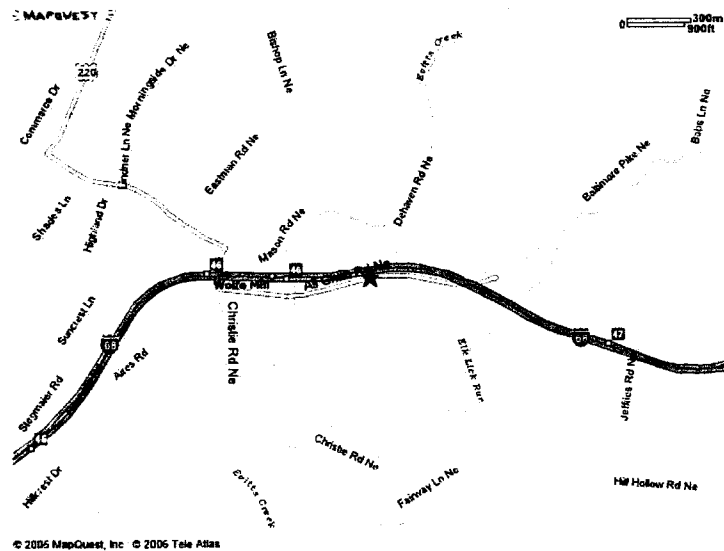
Ali Ghan Shrine Club  
Ali Ghan Road (Baltimore Pike), Cumberland

Coming from the East:

From I-70 and 270, exit onto I-68 West at Hancock. After you pass Rocky Gap State Park take Exit 47 (Dehaven Road exit). This will bring you to Rt. 144 (Baltimore Pike). Make a left turn onto Baltimore Pike, go a short distance, then make a left hand turn at the sign for the entrance to the Ali Ghan Shrine Club.

Coming from the West:

Take I-68 East. After you pass the vacant Mason's Barn Restaurant building and the Folick's Mill Motel (one mile east of Cumberland), take Exit 46 (Rt. 220 Bedford Road) off of I-68. Go to the stop sign and make a left hand turn. Go a short distance and you'll see the entrance sign (on the right) for the Ali Ghan Shrine Club. Turn right at the sign.



© 2005 MapQuest, Inc © 2005 Tele Atlas

Registration for these meetings is in your Winter newsletter.

Bring a camera and take pictures of your members attending the Regional meetings. These pictures can then be used with a press release and be placed in your local papers. This is a great way to market FCE in your area.

## Directions to Region II Meeting April 20

First Evangelical Lutheran Church  
Chatham Road, Ellicott City

From the South - Go north on Route 29. Exit West on MD Route 40. Get into far left lane. Turn left at first light, St. John's Lane. Turn right at first light, Frederick Road. Turn left just past top of first hill at Chatham Road. Church is immediately on the right.

From the West - Take Route 70 East. Exit at Route 40 Ellicott City. Follow Route 40 to intersection of Frederick Road and Pine Orchard Lane (Just past Clark's Ace Hardware). Turn right. Follow Frederick Road past the library and Senior Center. Turn right onto Chatham Road. Church is on your immediate right.

From the East - Take Route 100 West toward Ellicott City. Exit at Long Gate Parkway. Turn right. Go to second light. Turn left onto Route 103, Montgomery Road. You will cross back over Route 29. Follow road to dead end, which is St. John's Lane. Turn right on St. John's Lane. Follow St. John's Lane to first light, Frederick Road. Turn left and go to Chatham Road. Turn left. Church is on immediate right.



© 2005 MapQuest, Inc

©2008 NAVTEC

Hope to see you in there!

## **WOMEN'S HERITAGE CENTER**

This is provided for your information and is an issue on which you may want to take action.

### **BACKGROUND**

The Maryland Women's Heritage Center and Museum, building on more than two decades of Maryland Women's History Month observances and materials, will be the FIRST state-based museum in the nation to acknowledge the immense contributions of the full diversity of women, both famous individuals and "unsung" women and women's organizations, throughout our state's history. It will make the history of our state complete, adding the achievements of historic and contemporary women to the information that is now in museums, textbooks, and archives which overwhelmingly omits the accomplishments, challenges, and leadership of women in society, government and public issues, health care and the arts, science and technology, business and industry, as well as in our religious institutions, workplaces, schools, communities, and families. The Center will be highly interactive and provide a place for learning about the past, convening around current women's issues, and inspiring future generations. The Maryland Women's Heritage Center is a nonprofit, nonpartisan, public-private partnership that will be independent of any state agency or entity.

### **ACTION NEEDED**

The proposed budget for this session of the Maryland Legislature includes funding in the Department of Planning's Arts and Museums Budget for the development of the Maryland Women's Heritage Center. It is VITAL that legislators receive phone calls, letters, e-mails, and visits from constituents and organization in support of retaining all of this funding.

### **TALKING POINTS**

Totally inclusive, non-partisan Center with leadership from two Maryland First Ladies, Kendel Ehrlich and Frances Hughes Glendening, as well as State Superintendent of Schools Nancy Grasmick.

Strong foundation—building on 25 years of the nationally recognized Maryland Women's History Project.

Comprehensive and diverse – honoring women from diverse backgrounds from every region of the state through comprehensive and highly interactive exhibits, resources, programs and activities.

More than a women's history museum – including a focus on current issues and leadership development for young women and girls, providing information and inspiration to girls and boys to shape the future.

Unique – the first state center of its kind in the nation.

### **HEARINGS**

The hearings about the MWHC were scheduled for February 13 and February 14.

**ONLINE INFORMATION:** Phone numbers, mailing addresses, fax numbers and e-mails for all members of the General Assembly (Senate and House) are online at [www.mlis.state.md.us](http://www.mlis.state.md.us)

### **ACTION YOU CAN TAKE**

#### **1. Contact Or Meet With Each Of The Subcommittee Members**

##### **SENATE Public Safety, Transportation, and Environmental Subcommittee**

Chair: James E. DeGrange, Sr. (Anne Arundel County)

##### **HOUSE OF DELEGATES Transportation and the Environment Subcommittee**

Chair: Peter Franchot (Montgomery County)

Vice Chair: Mary-Dulany James (Harford County)

#### **2. Contact The Chairs And Vice-Chairs Of The Senate & House Committees**

##### **SENATE Committee: Budget And Taxation**

Chair: Ulysses Currie (Prince George's County)

Vice-Chair: Patrick J. Hogan (Montgomery County)

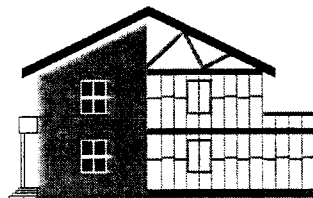
##### **HOUSE Committee: Appropriations**

Chair: Norman H. Conway (Wicomico County)

Vice Chair: Talmadge Branch (Baltimore City)

**3. Contact any other legislators who serve your district or with whom you have a relationship.**

**4. Disseminate this information to all of your networks and e-mail lists to ask them to do the same!**



## **None Escapes Vice Shame**

Taken from The Country Women

The ACWW January-March 2006 newsletter.

A resolution on the trafficking of women and children passed by the 2004 ACWW Triennial Conference called on member societies to urge their national government to fight the trade. Molly Hughes, vice chair of the UN Committee, warns that many countries are still not taking adequate steps. She presents this update:

The WORLDWIDE trade in human beings is growing, the Asia-Pacific Human Rights Conference in Beijing China was told last August. An estimate by the International Labor Organization was of more than 2 million people a year trafficked, often as sex slaves or domestic servants.

No country is immune to the scourge, said the Executive Director of UNICEF. In South-East Asia, the sex trade is a major factor with girls from poor villages in countries such as Myanmar, the Philippines and Cambodia who are lured into the massage parlors and karaoke clubs of the cities or flown to brothels in Australia, Japan, South Africa and the United States. Very young boys are sold in China itself, partly because of stringent rules on the size of families. North Korean women are trafficked into the country and when found by the Chinese authorities forcibly repatriated and held under horrific conditions in detentions centers.

Women and girls are particularly vulnerable in war-torn areas like Afghanistan and Sudan which have large numbers of refugees. Places in Afghanistan's government are now available to women and it is to be hoped that the problems of the camps will be addressed.

Girls from Eastern Europe are trafficked to the West, including the UK, in great numbers, particularly those from Moldova and the Ukraine. Some are destined to be moved onward to Canada and the USA.

Among factors hampering efforts to stop trafficking are the poverty that forces some families to sell the children, a lack of education around the worlds and the lucrative nature of the vice business.

One of our own **MARILYN SIMONDS** receives **ANGEL OF THE YEAR Award** from Oakdale Emory UM Church Staff

Included in Webster's definition of the word "angel" are "a guiding spirit or influence," and "a person regarded as beautiful, good, innocent...." These certainly apply to Marilyn Simonds, who is truly a beautiful person whose guiding spirit is evident in so many aspects of life at Oakdale Emory United Methodist Church.

Marilyn is a gentle and quiet leader who has given hours and hours to this church family. From bulletins and copying on Wednesdays, to oranges and grapefruits in December, she is always there to give a helping hand. Marilyn played a major role in the production of our recent pictorial directory by spending many hours recruiting volunteers and working herself during the photo sessions at church – answering the telephone and greeting those coming to be photographed. Bad weather didn't even keep her away on some of those days! Marilyn is always making sure folks have a ride to Circle meeting or other events, and is an avid recycler who has been known to "re-route" trash from the waste can to the recycle bin!

"Marilyn has been one of the blessings I have received through working at OEUMC," writes Amy Cole. "I probably wouldn't have gotten to know Marilyn otherwise, and she is such an amazing woman. She is an inspiration and such a bright guiding light for me."

As Leslie Myers suggests, a quote from William Penn sums up the way Marilyn lives: "I expect to pass through life but once. If therefore, there be any kindness I can show or any good thing I can do to any fellow being, let me do it now, and not defer or neglect it, as I shall not pass this way again."

Jane Ann DePas, our staff poet, sums up how we perceive Marilyn and her priorities:

We all look to Marilyn with an approving nod,  
But she does not notice – She's looking up to God.

Thank you, Marilyn, for all you do and for your constant Christian witness. May all the love and joy you share with others return tenfold to you! We love you – You are our Angel of the Year!

